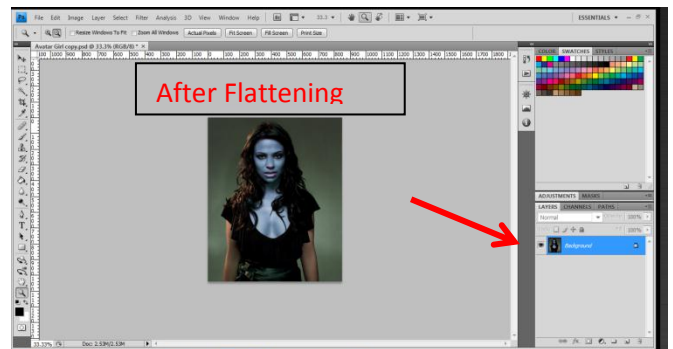
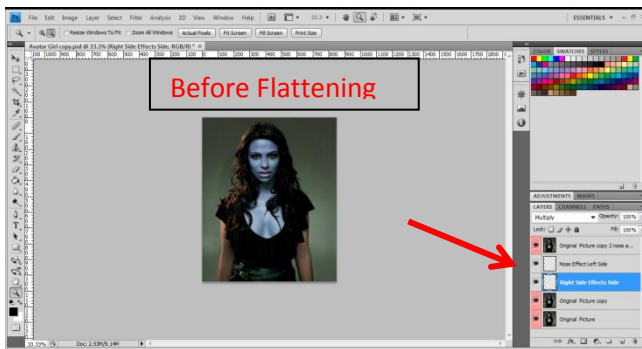


Avatar Yourself

<http://free-web-design.co.cc/create-james-camersons-avatar-movie-poster-in-photoshop-tutorial.html>

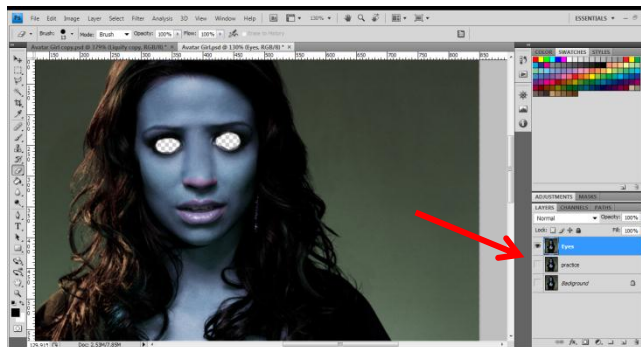
Create a new folder in you Digital Design Project Folder and name it **Avatar**. Please follow the tutorial directions to create your own **Avatar**. Also you must take a picture of yourself using one of the digital cameras in the classroom or the hallway outside the room. Make your **NEW** document, with Preset to Custom, dimensions are 850 W X 1040 H in pixels Resolution setting at 72pixels/inch, with Color Mode at RGB and 8 bits finally background set to white. After you have finished the steps from one to six where it asks you to **FLATTEN** the **LAYERS** use the textbook page 2-21.



Now You are going to go to the **FILTER** Tab and click on **LIQUIFY** then in the tutorial directions it states to use the **FORWARD WARP** tool and the **BLOAT TOOLS** they are located on the left side of the screen once the **LIQUIFY** screen opens. Just go by trial and error and your preference when creating the effects for the eyes and nose. The **Bloat Tool** is just trial and error, but select a brush size (I used a size of 200) and then move the tool over the eyes and hold down the left mouse button and watch the eye grow.

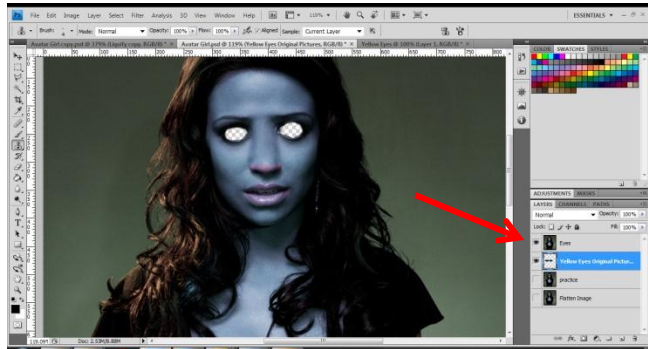
Step 8:

Make a duplicate layer of what you just made. Then using the **Eraser Tool** located between the Brush and Paint Bucket on the tool menu bar. You must turn off the two other layers in order to see the eyes disappear clicking on the **Indicates Layer Visibility Button** that the arrow is pointing towards.

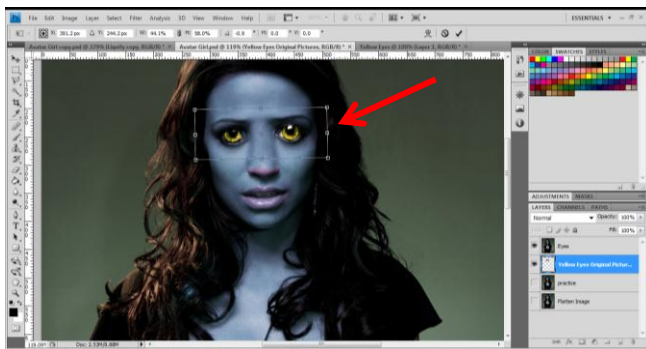


Then create a Layer >New> Layer where you place the eyes from the tutorial by actually Right Clicking and Copying the eyes into the new layer.(You will have to turn off the **Indicates Layers Visibility** button from the Eyes Layer to be able to see the eyes you pasted to the new layer).

Now turn on the **Indicates Layers Visibility** button on the Eyes Layer before on all layers and click Control T to turn on the **Transform Tool** so you can fit/place the eyes into your Avatar. (When you do the Control T you get a box with handles that you use to resize to get the eyes the way you want them).



This what the Transform Box looks like. Trial and error on fitment of the eyes. Once satisfied with the location click on the little check mark or just hit enter.



Please continue on with the directions from the tutorial to complete your Avatar. Have fun and **remember to save often.**